



APPLICATION:

### Multiple Conduits within Flexible and Rigid Walls

ID:

**IS:  
SP-FW/RW-E-02**

**INFORMATION:**

- Not to scale
- All units are in millimetres
- Tested according EN 1366-3
- [Approval ETA-10/0406](#)

### CFS-IS Intumescent Sealant

REV:

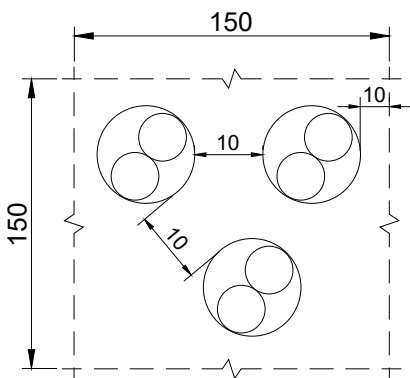
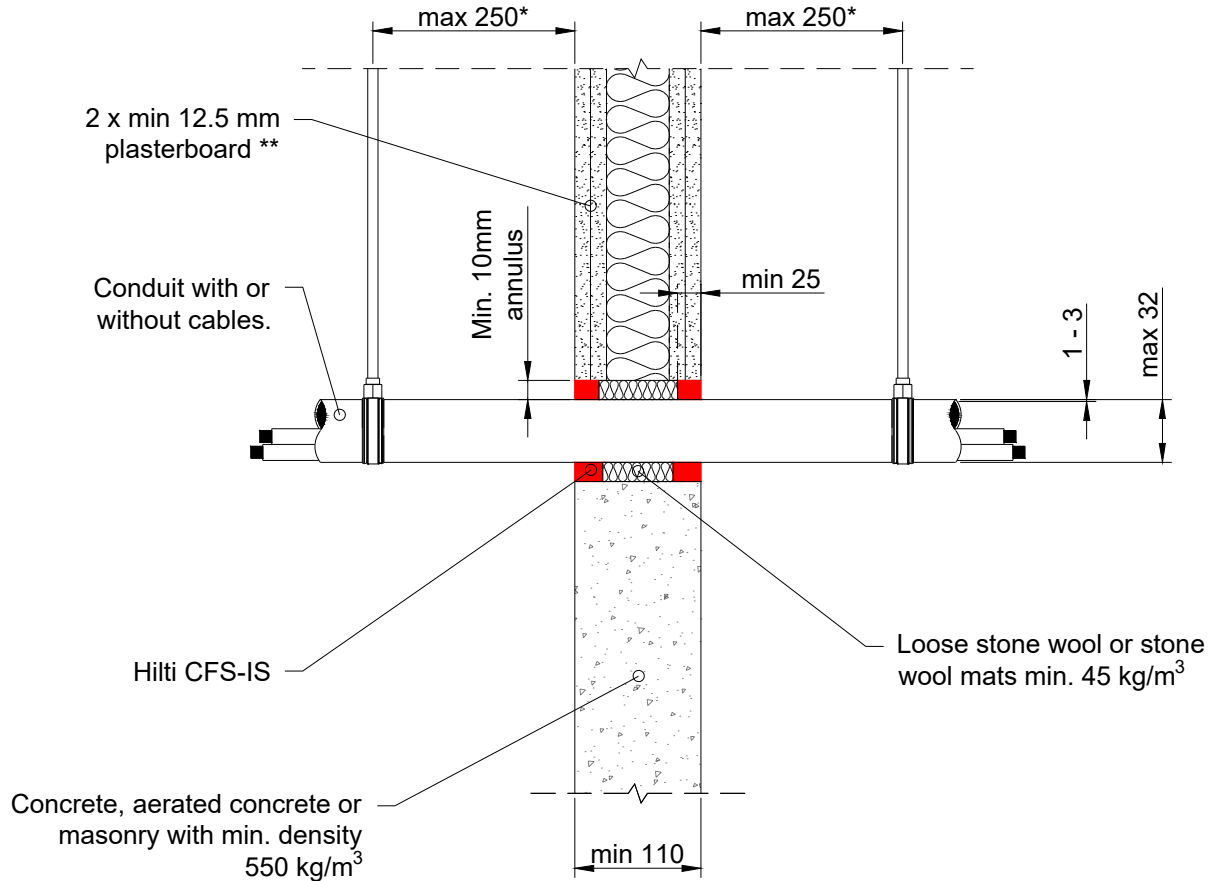
DATE:

**01**

**10/2024**

### Fire Rating up to EI 120

**Page 2/2**



Max opening size 150mm x 150mm or circular openings of equivalent area (Ø 165mm). Min. 100mm distance to other firestopping penetrations and timber studs. Min. 200mm to other penetrations (e.g., doors, windows etc.)

Ridig, flexible and pliable plastic conduits	Classification
Rigid, flexible and pliable plastic conduit up to Ø 40 mm with or without cables and conduits used pairwise up to Ø 80 mm;	EI 120 U/U
Flexible PVC conduit or PO conduit, waveheight 4,5 mm	
Rigid, flexible and pliable plastic conduit up to Ø 40 mm with or without cables and conduits used pairwise up to Ø 80 mm	EI 120 U/U

All sheathed cable types currently and commonly used in building practice in Europe (e.g., power, control, signal, telecommunication, data, optical fibre).

\* First support and ancillary products should be capable of achieving the same fire performance as the seal and supporting structure.

\*\* Comprising of timber or steel studs. Wall construction itself has been classified according to EN 13501-2.

1. The application limits on this detail are for guidance purposes only. For more detailed information based on the full range of available test results please contact the Hilti Technical Advisory Service.  
 2. The product and application has been assessed as a minimum to the BS 476 standard. It may have additional European and worldwide testing. Please contact Hilti for further information.  
 3. All installations should be carried out in accordance with Hilti's installation instructions and by competent & experienced installers using Hilti branded products.  
 4. All services are to be correctly and adequately supported to prevent collapse and distortion.