



APPLICATION:

Multiple Conduits within Flexible and Rigid Walls

ID:

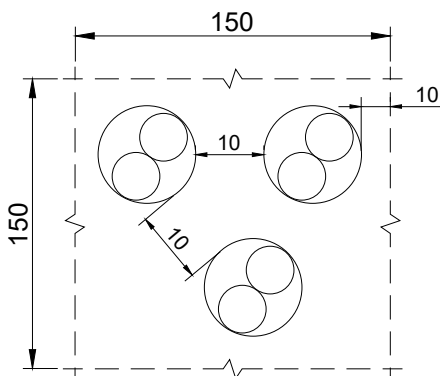
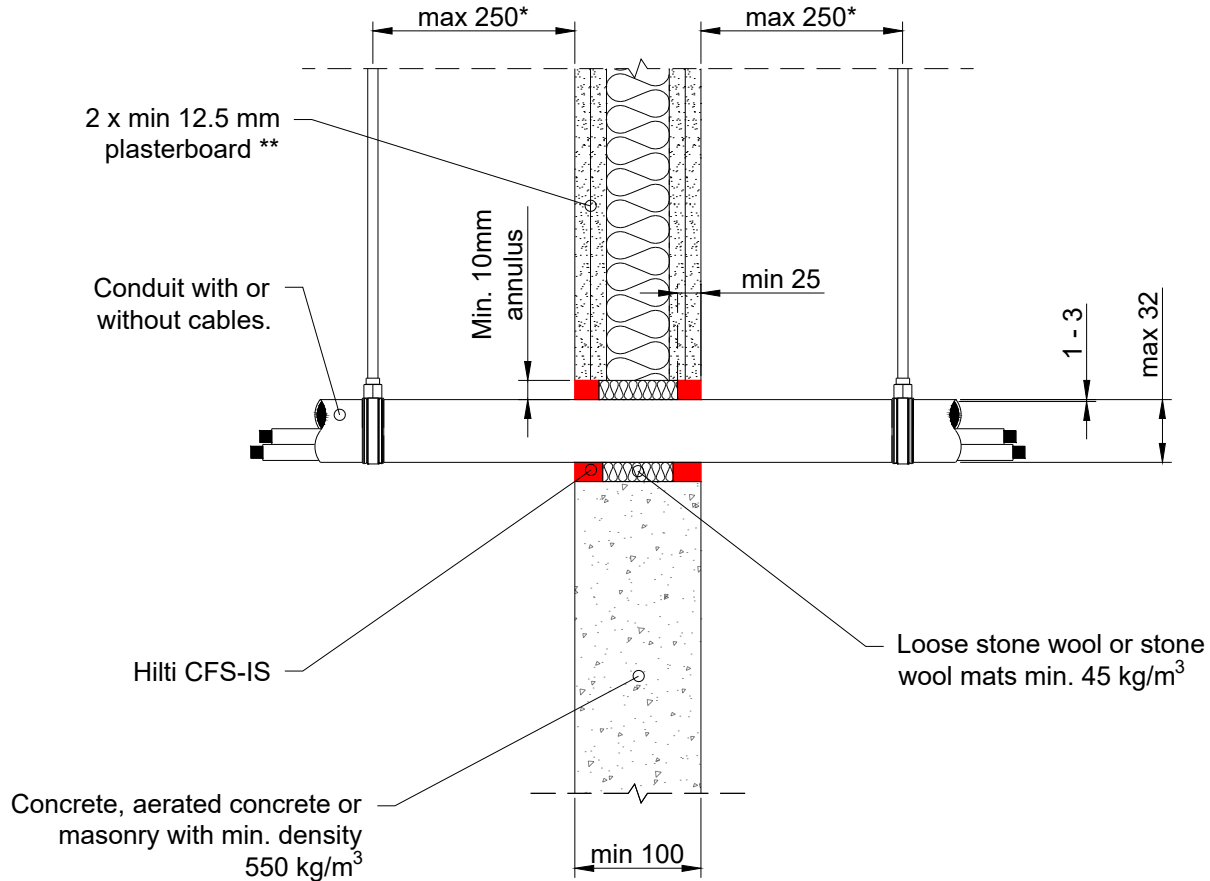
**IS:
SP-FW/RW-E-02****INFORMATION:**

- Not to scale
- All units are in millimetres
- Tested according EN 1366-3
- [Approval ETA-10/0406](#)

CFS-IS Intumescent Sealant

REV:

DATE:

01**10/2024****Fire Rating up to EI 120****Page 1/2**

Max opening size 150mm x 150mm or circular openings of equivalent area (Ø 165mm). Min. 100mm distance to other firestopping penetrations and timber studs. Min. 200mm to other penetrations (e.g., doors, windows etc.)

Multiple Conduits	
Conduit Type / Ø	Classification
Small Steel ≤ Ø16, arranged linear	EI 120 C/U
Small Steel ≤ Ø16, arranged linear	EI 120-U/C
Plastic, diameter 16 ≤ Ø 16 ≤ 32, wall thickness 1-3, arranged linear or in cluster	EI 120-U/C

All sheathed cable types currently and commonly used in building practice in Europe (e.g., power, control, signal, telecommunication, data, optical fibre).

* First support and ancillary products should be capable of achieving the same fire performance as the seal and supporting structure.

** Comprising of timber or steel studs. Wall construction itself has been classified according to EN 13501-2.

1. The application limits on this detail are for guidance purposes only. For more detailed information based on the full range of available test results please contact the Hilti Technical Advisory Service.
2. The product and application has been assessed as a minimum to the BS 476 standard. It may have additional European and worldwide testing. Please contact Hilti for further information.
3. All installations should be carried out in accordance with Hilti's installation instructions and by competent & experienced installers using Hilti branded products.
4. All services are to be correctly and adequately supported to prevent collapse and distortion.

Hilti (Gt. Britain) Limited | No 1, Circle Square | 3 Symphony Park | Manchester | M1 7FS

Freephone: 0800 886 100 | Website: www.hilti.co.uk

LEGAL NOTICE: This template contains Hilti Intellectual Property which is legally protected, including Community registration of Hilti trademarks. For use only by Hilti customers and in conjunction with Hilti products. No third party use/products is authorised and breaches Hilti's intellectual property rights. Hilti accepts no responsibility for unauthorized use and reserves all rights to take legal action to enforce its rights in law.