



APPLICATION:

### Metal pipes Through Slab

ID:

**CP638:  
MP-RF-M-04**

**INFORMATION:**

- Not to scale
- All units are in millimetres
- Tested according EN 1366-3
- Classification Report 23003B

**CP 638 Mortar + CFS-S ACR**

REV:

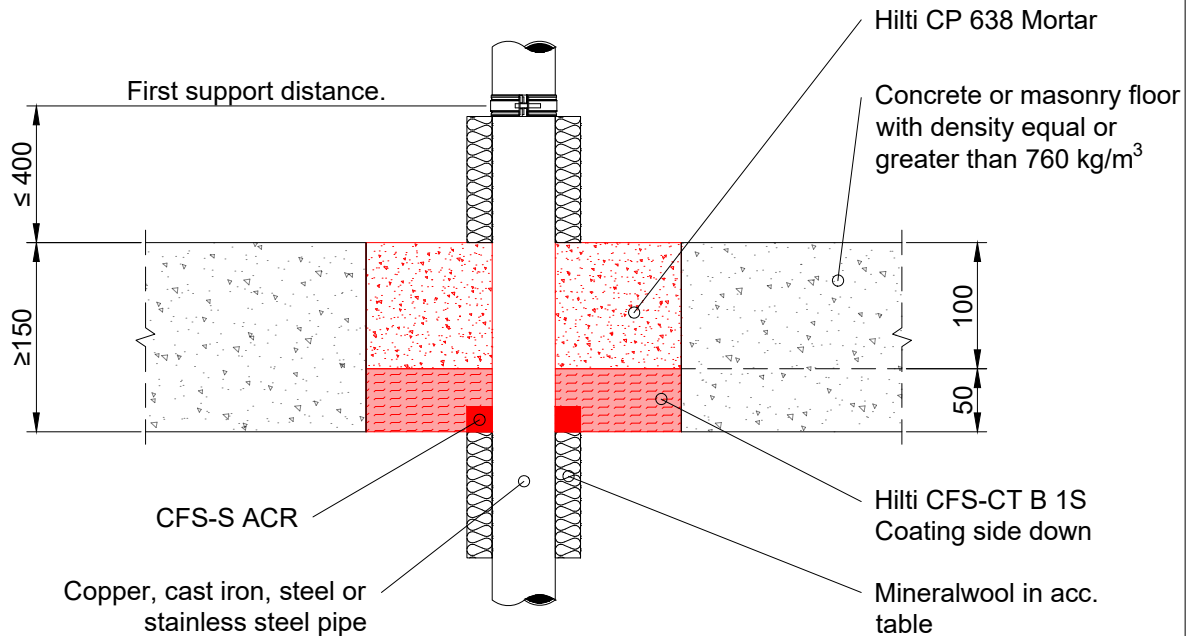
DATE:

**01**

**11/2024**

**Fire Rating up to EI 120**

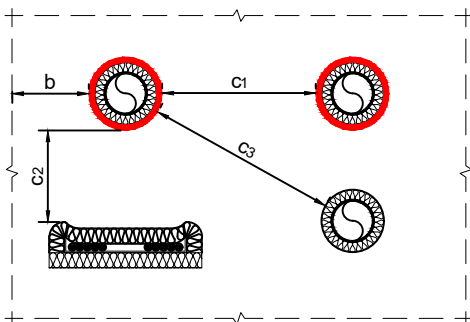
**Page 3/3**



**Notes:**

- All gaps around services and coated board edges filled with Hilti Firestop Acrylic Sealant CFS-S ACR

| Metal pipes with local interrupted insulation Rockwool Roclap H&V Section |          |                     |  |                                   |                              |
|---|----------|---------------------|--|-----------------------------------|------------------------------|
| Material  | Diameter | Min. wall thickness | Locally sustained: Rockwool Roclap Thickness | Length on both sides of the floor | Fire rating in mixed opening |
| Copper, cast iron, steel, stainless steel.                                | ≤ 28     | 0.9                 | 40   | ≥ 800                             | EI 120-C/U                   |
| Copper, cast iron, steel, stainless steel.                                | ≤ 54     | 1.2                 | 40   | ≥ 800                             | EI 120-C/U                   |
| Copper, cast iron, steel, stainless steel.                                | ≤ 108    | 1.5                 | 40   | ≥ 800                             | EI 120-C/U                   |
| Cast iron, steel, stainless steel.  | ≤ 165    | 5                   | 40   | ≥ 800                             | EI 120-C/U                   |



| Spacing overview for mixed seals |                |          |
|----------------------------------|----------------|----------|
| Description                      | Shortcut       | Distance |
| To seal edge                     | b              | ≥ 50 mm  |
| To other pipes with CFS-S ACR    | c <sub>1</sub> | ≥ 38 mm  |
| To cables with CFS-IS            | c <sub>2</sub> | ≥ 38 mm  |
| To any other services            | c <sub>3</sub> | ≥ 100 mm |

Maximum opening size without additional support: 2000 x 1800 mm or reduced width, with up-to 10m length. See classification report for further details.

1. The application limits on this detail are for guidance purposes only. For more detailed information based on the full range of available test results please contact the Hilti Technical Advisory Service.  
 2. The product and application has been assessed as a minimum to the BS 476 standard. It may have additional European and worldwide testing. Please contact Hilti for further information.  
 3. All installations should be carried out in accordance with Hilti's installation instructions and by competent & experienced installers using Hilti branded products.  
 4. All services are to be correctly and adequately supported to prevent collapse and distortion.